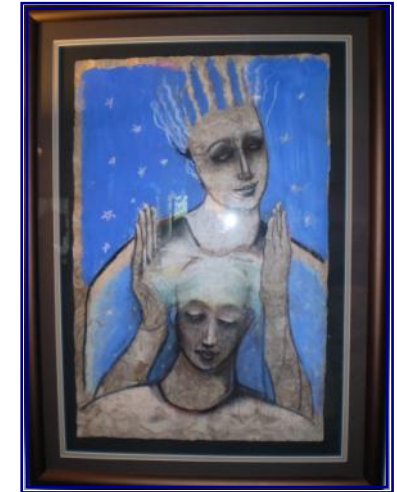


Sacred Radiance

Series 3



The Glow

Experiencing the Art,
Science & Lifestyle
of Attunement...

Saturday & Sunday
Dates To Be Set

An initiative of and sponsored by
The Emissaries (SA) Inc

Fees: The workshop fee of \$200 (or \$170 concession) includes tuition, handouts, morning & afternoon tea - limited scholarships are available. **Note** - the Sacred Radiance course 260 page workbook, Attunement - Love Made Visible, is required for the series and is available from the organisers for \$70. **Please bring a share lunch each day.**

RSVP: Date to be set.

Class Enquiries: Contact Jonathan MacIntyre on 8523 1329 or 0408 034 584, email welcome@attunementlifeenergy.org.au or log on to the website at www.attunementlifeenergy.org.au

The Riverdell Spiritual Centre - is a beautiful 9 acre rustic sanctuary with retreat, conference and accommodation facilities. This quiet haven is located on the banks of the Gawler River and accessed from Clifford Road, Hillier. It is approx. 4 kms SW of Gawler and around 40 kms N of Adelaide.



The Riverdell Spiritual Centre
❖ Clifford Road ❖ Hillier SA 5116
❖ Phone: (08) 8523 1329

Please complete and send to -

Sacred Radiance Series 3 ❖ The Riverdell Spiritual Centre ❖ Clifford Road ❖ Hillier S.A. 5116

Registration

Name: _____ Age: _____ Sex: M / F

Address: _____ P/C: _____

Telephone: _____ Mobile: _____ Email: _____

Enclosed: Full Fee - \$200.00 Concession Fee - \$170.00 Deposit - \$50.00

Cash Cheque - Please make cheques payable to: The Emissaries (SA) Inc.

Credit Card - Visa Mastercard Bankcard Receipt required

Credit Card Number:

Card Holder Name: _____ Expiry Date: ____/____/____

Card Holder Signature: _____

Being the Radiant One

As we let the Spirit of Life flow through us fully, it emanates out
in all we say and do and The Glow of our presence inspires a new world

Our generation of Life force, with which we touch loved Ones, is a daily practice and there is a level of consistent action required, in alignment with Source, to sustain it. Our Radiance of the Truth of Love is testament of this living in Attunement and through it we manifest creative and transformative lives.

Sacred Radiance Series 3 - The Glow - presents you with new opportunities, challenges and several additional principles with which to explore the art, science & lifestyle of Attunement; the journey in Self discovery continues as we touch into:

- ☀ Spirit & Conscious/Sub Conscious Mind
- ☀ The Long Bone Attunement technique
- ☀ Group Radiation process
- ☀ Tuning into our Organs
- ☀ Steps 5, 6 & 7 - Spirits & Attitudes
- ☀ Attunement Self Care
- ☀ The Glands & Chakras Connection
- ☀ Right use of Power

Format: The workshop format includes an enjoyably dynamic range of activities, with each presentation being reinforced with personal exploration and experiential exercises.



Rosemary demonstrating the Thyroid position during an attunement in a Sacred Radiance 3 class



Facilitator: Jonathan MacIntyre is an approved International Attunement Guild Teacher and qualified Practitioner with 16 years experience. On occasion, he is joined by other Attunement or professional associates teaching in these Classes.

Timing: Saturday and Sunday. Dates to be set. The Class commences at 8.45am sharp and closes at 5.00pm each day.

Bookings: Complete and send in the registration form provided, along with the relevant fees and your response to the questions opposite. A minimum deposit of \$50 is required with your registration.

Venue: This class will be held at -
The Riverdell Spiritual Centre
Clifford Road, Hillier SA 5116

Accommodation: Several options are available at the Centre at modest prices. Booking early is essential.

(continued on back page...)

Describe how your life is currently influenced by your experience of Attunement:
